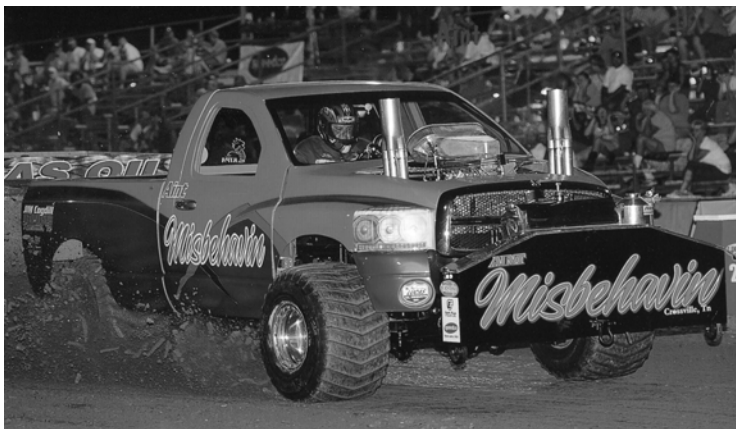


# CUMBERLAND COUNTY FAIR TRUCK PULL

August 31, 2017  
Community Complex  
Crossville, Tennessee

## Stock - Modified - Open

OPEN 6200 lb. PRO STOCK TRUCK  
OPEN 4300 lb. TWO WHEEL DRIVE LIGHT MODIFIED  
OPEN 8500 lb. SUPER STREET 2.5 DIESEL  
OPEN 5500 lb. SUPER STOCK  
(Cumberland County Only)  
GAS STREET STOCK 4X4 (6500 lb.)  
GAS HOT STREET 4X4 (6500 lb.)



1st Place: \$300.00  
2nd Place: \$200.00  
3rd Place: \$100.00  
NO HOOK FEE

*Based on the number of entries in the class, management reserves the right to change class payback method from a fixed amount to a percentage payout*

**TENNESSEE**  
"Pulling Series"  
STATE CHAMPIONSHIP

### TRUCK AND TRACTOR PULLS

For More Information Call 931-484-9454

Weigh In Starts at 6:00 PM

Pulling Starts at 7:00 PM

PULLING SLED PROVIDED BY JUSTIN COLLIER  
TRUCK PULL CHAIRPERSONS: Bob Bottoms 931-248-6980  
Gary Adams 931-210-3418 ~ Jack Reed 931-260-6015

# RULES AND REGULATIONS

Management reserves the right to change order of class if entries are not adequate, and also reserves the right to substitute any judge or official if it becomes necessary.

Management reserves the right to decline to receive any entry fee without being liable for compensation.

Absolutely no one will be allowed inside ring during Truck Pull except authorized personnel without permission of Fair management.

Fair management will not be responsible for loss or injury to persons, trucks, and/or equipment.

Open 6200 lb. Pro Stock

MTPA Association Rules will apply.

Open 4300 lb. Two Wheel Drive Light Modified

MTPA Association Rules will apply.

Open 8500 lb. Super Street Diesel

MTPA Association Rules will apply.

## STREET STOCK TRUCK, RULES

- 1) O . E . M . heads and block - stock intake and exhaust manifold
- 2) Must have complete exhaust with mufflers
- 3) No double pumps
- 4) No engine larger than 460 ci
- 5) No V-10, No NOS
- 6) Must have stock axles
- 7) No dual wheels except 2wd
- 8) Must have stock bumpers
- 9) No hanging weights
- 10) No traction bars
- 11) No blocking of rear axles (cannot be solid)
- 12) Hook point must be in stock position (no short hitches)
- 13) Max hitch height is 26" for 4wd and 30" for 2wd
- 14) Truck must be street legal
- 15) No hulling
- 16) Max weight is 6500 lbs.
- 17) Must have D.O.T. tires (no cut, bar, ditch witch molded, or terrain tires)

## HOT STOCK TRUCK RULES

- 1) O.E.M. heads and block
- 2) No NOS
- 3) Must be naturally aspirated
- 4) Aluminum intake and headers are okay
- 5) Any cam is acceptable
- 6) One 4 barrel carburetor only
- 7) One ton limit on axles except 2wd
- 8) Winch and push bumpers are okay, but must be in stock position (this mean can notbe stuck out)
- 9) No hanging weights
- 10) Traction bars and blocking are okay
- 11) Hook point must be at least 36" of wheel base for 2wd and 4wd
- 12) Max hitch height is 26" for 4wd and 30" for 2wd
- 13) Max weight is 6500 lbs.
- 14) Must have working brakes
- 15) No excessive hulling
- 16) All trucks must follow general safety rules also
- 17) Must have D.O.T. tires (no cut, bar, ditch witch molded, or terrain tires)
- 18) No dual wheels except 2wd

***Tech official's decision is final***